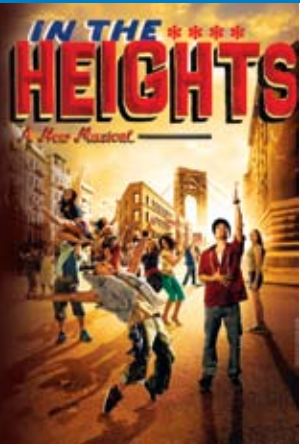




ANNUAL REPORT



2009/10 SEASON



Patrons receive instruction from Kristina Mann of Heart of the Valley Dance Academy prior to the performance of Groovaloo.

OUR MISSION

The mission of the Fox Cities Performing Arts Center is to serve as a gathering place for the community to engage in educational opportunities and enhance understanding and enjoyment of life through the creation and presentation of the arts. We will do this by providing a premier venue for performing arts attractions and a dynamic environment for our arts organizations.



A message from the **President** and **Chairman of the Board**

Dear Friends,

As we reflect on another strong season at the Fox Cities Performing Arts Center, we are proud to say that the mission of the Center is stronger than ever. During the 2009/10 Season, the Center thrived as a gathering place for the community, drawing more than 134,500 ticketed patrons to the Fox Cities Performing Arts Center and countless visitors for meetings, gatherings and community events. With so many enthusiastic supporters of the performing arts, the Center is excited to report that its also made promising progress in transforming patrons into participants of the performing arts.

In the fall of 2005, the Center introduced community engagement activities to its audiences. From the start, ticket holders of all ages and backgrounds showed their enthusiasm to connect with the performing arts through preshow discussions with local artists, postshow chats with the cast and crew and workshops designed to bring world-class artists into our local schools. The people of the Fox Cities and Northeast Wisconsin clearly want to learn about the performing arts, not just watch from their seats in Thrivent Financial Hall.

Last season marked the Center's most expansive and in-depth Appleton Papers Inc. Community Engagement Activities to date. An astounding 88 percent of titles presented by the Center included at least one outreach or engagement component resulting in meaningful connections with more than 8,200 students and adults. In-depth engagement programs like Performing Arts Touch the Hearts of Students (P.A.T.H.S.), Family First Nights and a new pilot program called Mirror Image have continued to amaze us with the uplifting power of the performing arts.

Please, join us now in reflecting on the 2009/10 Season and the strides the Center has made to engage the people of Northeast Wisconsin. Thank you for your continued support and enthusiasm, and thank you for being a part of the Fox Cities Performing Arts Center.

Warmest regards,


Susan Stockton
President


Mike Weller
Chairman of the Board

In 2009/10, 88 %
of titles presented
by the Center
included at least
one outreach or
engagement component.

The Bright Lights of Broadway

Community engagement begins with an interest in the performing arts, and for many people, that initial interest is inspired by a Broadway performance. Last season, the Center featured nine Broadway titles including two brand new musicals in *The 101 Dalmatians Musical* and *Little House on the Prairie The Musical*, a leading lady dressed in pink with *Legally Blonde The Musical*, some Latin heat with *In The Heights* and several of theater's greatest musicals of all

Whenever possible, the Center creates opportunities for the people of the Fox Cities to connect with touring artists and Broadway performers.

time including *Cats*, *Fiddler on the Roof* and *RENT*. For the Center, it was truly an honor to welcome Theodore Bikel as *Fiddler's* Tevye and Adam Pascal and Anthony Rapp of *RENT* to the Fox Cities spotlight in their defining roles.

Conversation Café

Whenever possible, the Center creates opportunities for the people of the Fox Cities to connect with touring artists and Broadway performers. For example, in 2009, members of the cast from both *RENT* and *In The Heights* joined a community Conversation Café at Harmony Café.

A program designed as a forum for dialogue, Harmony Café welcomed cast to share their stories and connect on both personal and professional levels with people in the Fox Cities.

Mirror Image

One of the many reasons Broadway has the power to engage people in the arts is that, as an audience, we are able see aspects of ourselves in the characters onstage. Building upon that intrinsic connection, the Center created a program called Mirror Image to help young girls feel empowered by *Legally Blonde The Musical*. The Center partnered



Elise Santora and Arielle Jacobs from *In The Heights* speak with community members during a Conversation Café held at Harmony Café in downtown Appleton.



Visit foxcitiespac.com and click on the Annual Report banner to see photos from the Mirror Image Project.

Big and Little Sisters pose for a picture after a Mirror Image workshop at the Center.

With parents having to work more and students spending more and more time in front of a TV or computer screen, the Family First Nights program is helping to strengthen family ties. The shows give families a chance to talk about issues within the context of the performance, opening up great discussions between parents and students.

— Kristin Griswold
Boys and Girls Club of the Fox Valley

with Big Brothers Big Sisters of the Fox Valley to bolster the self-esteem of young women and empower them to combat stereotypes and negative media messages.

Twenty young women and their mentors explored the role media plays in self-esteem and self-image over a three month period. The “Littles” and “Bigs” worked on collages, discussed the challenges they face and heard from local women leaders who have overcome negative stereotypes. In April, the group attended *Legally Blonde The Musical* and met with the actress who played Elle Woods following the show to talk about the damaging effects of negativity and share what they’ve learned.

Family First Nights

The 2009/10 Season also saw the return of a national initiative known as Family First Nights in partnership with the Boys and Girls Club of the Fox Valley. With the support of John and Sally Mielke and The Broadway League Inc., 14 Fox Cities families were strengthened

through shared experiences of the performing arts. Titles like *Little House on the Prairie The Musical* and *Fiddler on the Roof* provided families with platforms to discuss the challenges of family relationships, communication and love. Families attending *The 101 Dalmatians Musical* formed connections with each other and the canine stars of the show, rescued Dalmatians discovering a brighter future in the performing arts.



Family First Nights participants meet the stars of *The 101 Dalmatians Musical*.



Making the Arts Come Alive

Groovaloo

The Boldt Arts Alive! Series provides a window to the world's cultures, connecting people from across the globe right here in the Fox Cities. Best described as an eclectic mix of the performing arts, the series' 14 titles explored distant cultures with performances of Japan's Taiko phenomenon Shidara, Band of the Irish Guards and The Tchaikovsky Ballet's *Sleeping Beauty*. The series also featured aspects of American culture, engaging the Fox Cities with Mannheim Steamroller, *The American Bluegrass Masters' Tour* with Bobby Osborne and the inspiring hip-hop sensation Groovaloo, fresh from their television and off-Broadway engagements.

The Boldt Arts Alive! Series is a natural fit for exploring the performing arts, and it inspired some of the best Appleton Papers Inc. Community Engagement Activities to date at the Fox Cities P.A.C.

Exploring the Cultures of the World

One of the most popular Appleton Papers Inc. Community Engagement Activities of the 2009/10 Season was tied to the Japanese Taiko drumming ensemble Shidara, which performed at the Center in March. With a standing room only audience, Lynn Sessler from Clovis Grove Elementary led 296 people through a preshow discussion of Japanese history and culture to provide insight to the drummers' obvious commitment to perfection in the arts.

As a core mission-based program, Boldt Arts Alive! tickets are subsidized to an average price of \$25.



Patrons experiment with Japanese drums prior to Shidara.

Building a Platform of Understanding

In October, the Center hosted a preshow discussion tied to the legendary Barter Theatre production, *Of Mice and Men*. A classic tale of friendship from the anthologies of American literature, the Center welcomed the opportunity to approach a challenging subject – how society treats people with cognitive disabilities and mental health issues – by exploring the many facets of the main character, Lennie. Karen Aspenson from the National Alliance on Mental Illness – Fox Valley (N.A.M.I.) led a preshow discussion exploring a sensitive social concern through the medium of the performing arts.

First Hand Perspective

In April, the Center welcomed its first bluegrass headliner in *The American Bluegrass Masters' Tour*. An enthusiastic subculture of the Fox Cities music scene, audiences were excited by a preshow discussion connecting them directly with



Bluegrass is a new genre for me so it expanded my knowledge with the discussion.

— Preshow discussion attendee
at American Bluegrass Masters Tour

performers as well-known as bluegrass legend Bobby Osborne and his band Rocky Top X-Press. The evening was a unique experience both for the artists and the audience.

Taking Center Stage

In May, the Center took the idea of community engagement even further by inviting local dance students from Valley Academy for the Arts to perform with ODC/Dance San Francisco's *The Velveteen Rabbit*.

After weeks of rehearsals at their Neenah studio, 14 young dancers had the chance to perform with a leading national dance company. While rare, these opportunities give students of the arts the chance to see what a professional career might be like, spending time backstage, working with a director and enjoying a well-deserved standing ovation.



The Art of Education

The Thrivent Financial for Lutherans Education Series engages students in experiential learning through the performing arts, fostering creativity and imagination in education. During the 2009/10 Season, the Center's education series hosted 24,591 students and educators from Northeast Wisconsin at 19 performances. Each title tied directly to the Wisconsin Model Academic Standards for students in grades preK-12.

Reaching beyond the theater experience, the Center welcomed opportunities to engage students in workshops by bringing visiting artists and community experts into the classroom environment. In April, the

Center formed a special connection between students and artists with a preshow workshop at Mt. Calvary Lutheran School in Menasha. Musicians from *Stolen Moments: The First 100 Years of Jazz* introduced the history of jazz as an American art form and helped students understand its influence in popular music today.

Another highlight of the Thrivent Financial for Lutherans Education Series was the kindergarten – fourth grade performance of *Seussical*. In celebration of Read Across America Day and Dr. Seuss' birthday on March 2, the Center asked local community leaders and professionals to read in classrooms throughout the Fox Cities.



Musicians perform for students at Mt. Calvary Lutheran School.

Forming P.A.T.H.S. of Success

Last season, the Center continued a Fox Cities outreach initiative known as Performing Arts Touch the Hearts of Students, more commonly known as P.A.T.H.S. In partnership with Kaukauna High School's "School Within a School" (SWS) at-risk program, the Center welcomed junior and senior students to experience performances over the course of the school year. Drawing on themes from the Broadway musical *RENT* and an education series performance of *Romeo and Juliet*, students who are at risk

“When we started (with the program) doing improv games, nobody did anything. I didn’t do anything. Then people started doing them. People you didn’t think would talk started talking. When you go out of the class it transfers into the hallways.”

— Troy, SWS student
Kaukauna High School

of not graduating learned about building healthy relationships, communicating effectively, problem solving and positive self-expression. In a post-program survey, 88 percent of these at-risk students

agreed that, “their choices will lead them in the direction they want to go.” For students facing real world challenges on a daily basis, good decisions build a successful future.



Seussical inspired artwork by a student from Bethlehem Lutheran School in Hortonville.

The Center’s Thrivent Financial for Lutherans Education Series hosted 24,591 students and educators in performances that tied directly to the Wisconsin Model Academic Standards for students in grades preK-12.



Anthony Rapp and Adam Pascal in RENT.



A Gathering Place

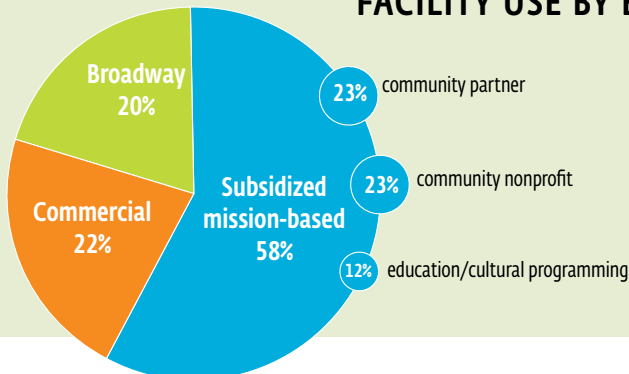
Driven by its mission “to serve as a gathering place for the community to engage in educational opportunities and enhance understanding and enjoyment of life through the creation and presentation of the arts,” the Center strived to make its venue accessible and enjoyable. Last year, the Center hosted 311 events.

Hosting the Community

To encourage use of the Center by local nonprofits and community organizations, the Center subsidizes its use fees by 40-60 percent. For example, the American Heart Association’s “Go Red for Women” luncheon is a nonprofit fundraising event that benefited from the Center’s facility use subsidy.

Each year since 2005, the Center has welcomed the opportunity to host “P.A.R.T.Y. at the P.A.C.” Targeted to reach students as they start driving, Prevent Alcohol and Risk-Related Trauma in Youth (P.A.R.T.Y.) is an outreach program that demonstrates the consequences of poor choices. Last year, Appleton Medical Center and the Theda Clark Medical Center Foundation designed a reenactment

FACILITY USE BY EVENT TYPE



Event types include:

- Broadway** >> *Cats, Mamma Mia!*
- Commercial** >> Lorie Line, Jim Brickman
- Community partner** >> business meeting
- Community nonprofit** >> American Red Cross
- Education/cultural programming** >> *Sleeping Beauty, Seussical*

of a highway crash with the help of local police, firefighters, EMTs and survivors. More than 4,500 students got a clear message that texting while driving can have very real, very serious consequences.

Working in Harmony

The 2009/10 Season also included a series of five performances by the Center's resident partner, the Fox Valley Symphony. Highlights of their season included Berlioz's *Symphony Fantastique* in November, the

Hollywood Pops concert in February and a performance of *The New World Symphony* and *The Red Violin* in May.

Accessible to Everyone

In 2009, the Center's newly formed accessibility committee partnered with the Fox Cities-based organization, Celebrating Abilities, to hold the first Accessibility Services Open House in October. The event showcased how the performing arts can inspire people of all abilities in our community, regardless of

apparent disabilities. In conjunction with Celebrating Abilities' annual awards ceremony, the Center welcomed people to test and try services including accessible seating, large print programs, complimentary valet parking for people with disabilities and open captioning performances, thanks in part to a grant by the Theatre Development Fund. More than 125 people came to the Center to explore their accessibility to the arts.

“The arts have no boundary, for people with physical disabilities the Fox Cities Performing Arts Center has made its facility fully accessible without boundaries to enjoy.”

— Joe Martin, Council President
8th District, Alderman



A Community of Giving

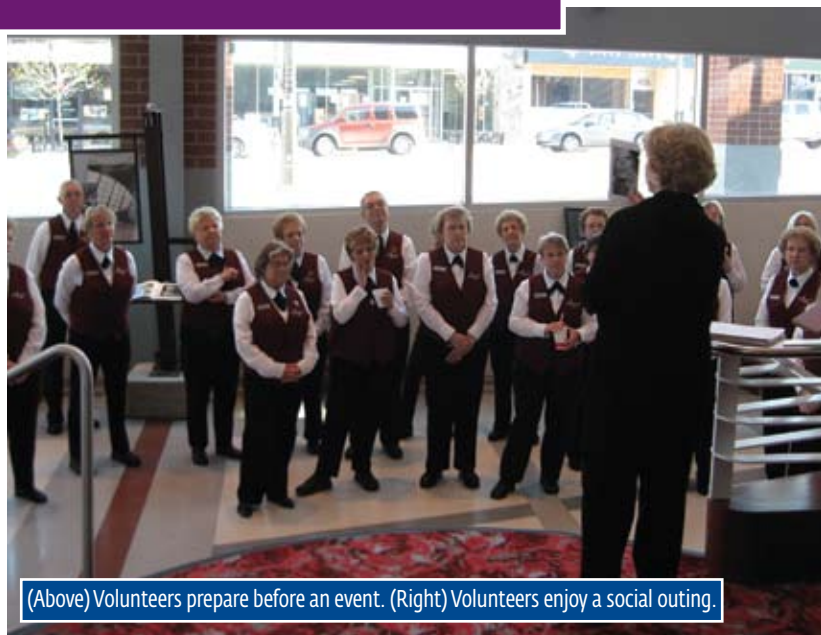
The volunteers of the Fox Cities Performing Arts Center share a willingness to give back to their community and a commitment to provide the best possible performing arts experience. More than 400 dedicated volunteers are engaged each year at the Center, giving of their time and their talents as they play key roles in the Center's visitor experience. Whether they are scanning your ticket, ushering you to your seat, checking your coat, answering a question or wishing you a wonderful

night, the Fox Cities P.A.C. volunteers have smiles to share. During the 2009/10 Season, volunteers donated 29,832 hours in support of the Fox Cities Performing Arts Center's mission.

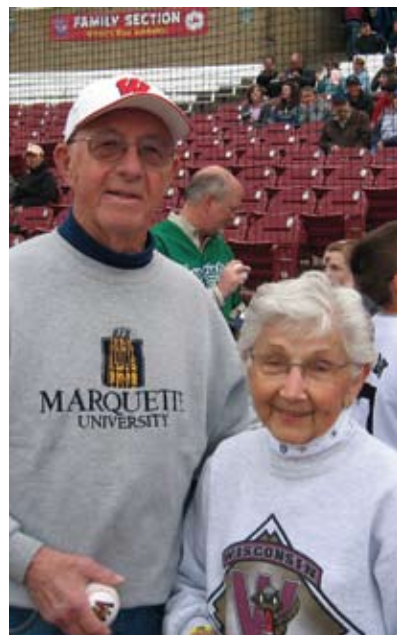
When the Lights Come up

Volunteers create a community of their own at the Fox Cities P.A.C. With more than 400 interesting people to get to know, volunteers can be found enjoying all sorts of social activities. From ladies lunches to Packers potlucks and Broadway bus trips, Fox Cities P.A.C. volunteers are just getting started when the theater lights come up.

More than 400 dedicated volunteers are engaged each year at the Fox Cities P.A.C.



(Above) Volunteers prepare before an event. (Right) Volunteers enjoy a social outing.





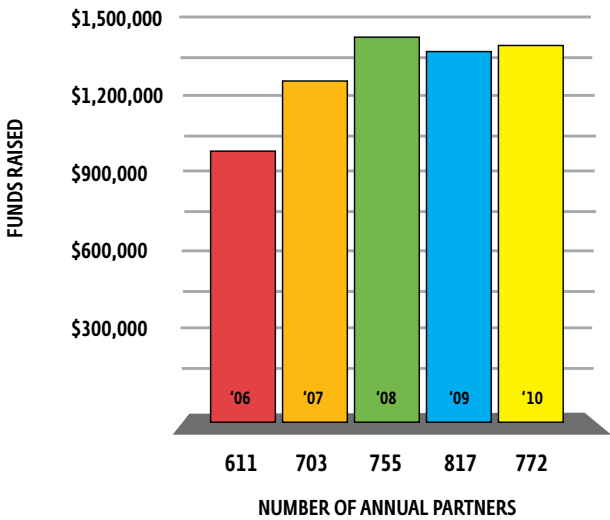
Fox Cities Choral Music Festival

The Center's mission would not be possible without the support of more than 750 business and individual Annual Partners.

Fundraising

The Fox Cities Performing Arts Center's mission would not be possible without the support of more than 750 business and individual donors. All Annual Partners, whether they contribute \$50 or \$5,000 play a crucial role in making the Center a place to gather, connect and share in the performing arts.

ANNUAL CAMPAIGN SUPPORT



The Fox Cities Performing Arts Center strives to engage its Annual Partners and allow them to experience exactly how their gift brings the Center's mission to life. In the 2009/10 Season, the Center welcomed Annual Partners to witness the impact of their gifts firsthand with backstage tours, special invitations to observe student reactions at an education performance and an Annual Partner appreciation event tied to the Fox Cities Choral Music Festival. Annual Partner benefits allowed donors to experience the power of the performing arts and the importance of their charitable investment in the Center.

A Sound Investment

Programs like the Appleton Papers Inc. Community Engagement Activities, Boldt Arts Alive! Series and Thrivent Financial for Lutherans Education Series are made possible by a healthy balance of earned and contributed income. During the 2009/10 Season, the Center's ratio of earned to contributed income was 14 percent higher than the national average of comparable nonprofit performing arts centers.

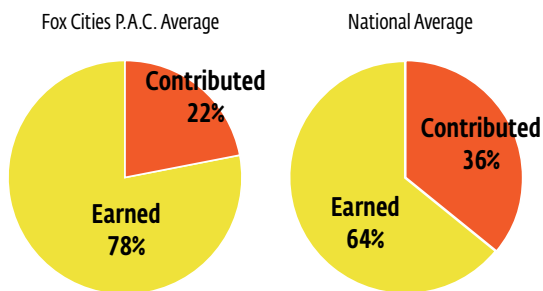
The Fox Cities P.A.C.'s balanced financial structure and conservative approach to budgeting allowed the Center to weather a turbulent economic climate while continuing to fulfill its mission as a nonprofit 501(c)3 organization. In fact, 74 percent of the Center's operational budget was invested in program services that directly impacted people in the Fox Cities and Northeast Wisconsin. As a testament to its efficient operations, the Center beat its projected operational budget by 9 percent.

The Fox Cities P.A.C. continued to benchmark its operations against comparable performing arts centers nationwide. Even in a turbulent economic period, the Center's metrics for efficiencies indicate its focus on lean practices has been successful. For instance, during the 2009/10 Season, the Center earned 34 percent more in ticket sales for every dollar spent on marketing than other comparable organizations.

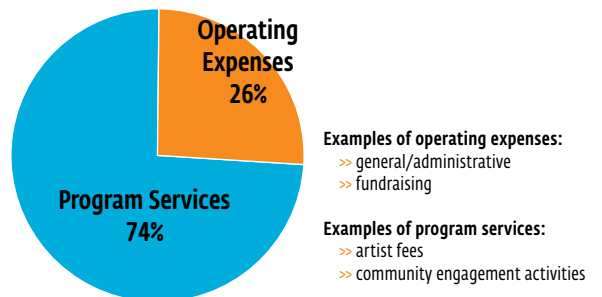
The Center earned 34% more for every dollar spent on marketing than other arts organizations nationwide.

The Center's focus on forging partnerships through community engagement and its commitment to conservative fiscal planning will position the organization to emerge from the current economic downturn stronger than ever.

EARNED VS. CONTRIBUTED INCOME



FOX CITIES P.A.C. AVERAGE EXPENSES



National average per The North Group Inc. 2008 study of 32 premier performing arts organizations.

STATEMENT OF FINANCIAL POSITION

Year Ended June 30, 2010

ASSETS

Cash and cash equivalents	603,622
Accounts receivable	207,850
Inventory	26,390
Prepaid expenses	375,765
Contributions receivable	1,561,536
Room tax receivable	6,430,000
Investments	26,349,783
Investments designated for deferred compensation	77,613
Property and equipment, net	46,290,948
Capitalized bond fees, net of amortization of \$237,679 and \$210,486, respectively	452,950
Total assets	82,376,457

LIABILITIES AND NET ASSETS

Liabilities

Accounts payable	46,524
Accrued liabilities:	
Payroll and payroll taxes	83,777
Interest	106,632
Other	168,142
Advance collections	346,925
Conditional transfers	197,500
Deferred compensation	77,613
Bonds payable	43,130,000
Total liabilities	44,157,113

Net assets

Unrestricted net assets	29,099,706
Temporarily restricted net assets	9,119,638
Total net assets	38,219,344
Total liabilities and net assets	82,376,457

STATEMENT OF ACTIVITIES

Year Ended June 30, 2010

SUPPORT AND OPERATING REVENUE

Gross event revenue	7,515,192
Less agent event revenue	(5,858,763)
Net event revenue	1,656,429
Fees earned from agent sales	532,708
Contributions*	2,781,172
Investment and interest income	3,777,341
Total support and operating revenue	8,747,650

EXPENSES

Gross event costs	7,913,777
Less agent event costs	(5,326,055)
Net event costs	2,587,722
Bond expenses	1,238,050
Depreciation and amortization	1,519,303
Administrative expenses	1,466,795
Fundraising	581,348

Total expenses 7,393,218

Change in net assets 1,354,432

Net assets:

Beginning of year	36,864,912
End of year	38,219,344

*Contributions include cash and pledges for the Annual Partner Campaign and The Keystone Campaign. Also included in contributions are grants, City of Appleton one percent hotel room tax, interest payments made through area municipalities' hotel room tax for the City of Appleton, Wisconsin Fixed Rate Redevelopment Revenue Bonds, Series 2001A, in-kind gifts and one time operational gifts. The financial highlights and footnotes presented in this report are derived from the Fox Cities Performing Arts Center's audited financial statements.

ANNUAL PARTNERS (as of June 30, 2010)

The Fox Cities Performing Arts Center wishes to thank its Annual Partners who provide financial support that subsidizes the cost of presenting spectacular performing arts attractions, cultural and education programs and general operating expenses.

Leader (\$100,000+)

Appleton Papers Inc.
The Boldt Company
William and Bettyjo Heckrodt
Thrivent Financial for Lutherans

Platinum Partner (\$50,000 - \$99,999)

Bemis Company, Inc.
Bergstrom Automotive
Community First Credit Union
Kimberly-Clark Corporation
Menasha Corporation
Miller Electric and ITW
Oshkosh Corporation Foundation, Inc.

Diamond Partner (\$25,000 - \$49,999)

Faith Technologies, Inc.
Jewelers Mutual Insurance Company
Miron Construction Co., Inc.
Plexus Corp.
SECURA Insurance Companies
Wisconsin Energy Foundation

Gold Partner (\$10,000 - \$24,999)

Air Wisconsin Airlines Corporation
AZCO INC.
O.C. and Pat Boldt
Broadway Across America
Bonnie and Bob Buchanan
CR Meyer
Gannett Foundation/The Post-Crescent
John and Marilyn Gilbert Fund**
Hand and Upper Extremity Center of
Northeast Wisconsin, Ltd.
The Leech Charitable Fund**
Robert and Patricia Endries Family
Foundation, Ltd.
Seifert Family
Mowry Smith
St. Elizabeth Hospital —
Affinity Health System
U.S. Oil/Schmidt Family Foundation, Inc.
US Bank

Silver Partner (\$5,000 - \$9,999)

Robert and Laura Abernathy
Badger Plug Company
A. Ralph Ballinger
Jan C. Bax, M.D., Ph.D.
The Business Bank Community Fund**
Cambria Suites Appleton
Candlewood Suites
Bruce and Nancy Chudacoff
Michael Cisler and Sarah Traas
Family Foundation
CopperLeaf Boutique Hotel & Spa
Fox Cities Stadium Charitable Fund
Godfrey & Kahn, S.C.
The Guardian Life Insurance Company
of America
Integrity Insurance
Chuck and Barb Merry Fund**
Michiels Fox Banquets Rivertyme Catering
Dr. Lowell and Mary Peterson
Ken and Peggy Philippi
Radiology Associates of the Fox Valley, S.C.
Radisson Paper Valley Hotel
Residence Inn by Marriott - Appleton
David and Kim Ritzow
Robert and Roberta Krempin Roloff
Walter and Amelia Rugland
William and Barbara Schmidt
Becky and Jon Stellmacher
Susan Stockton and William Garvin
Mary A. Strange
ThedaCare

Ticketmaster

David and Tari Toivonen
Toussaint Family Fund**
Jim and Nancy Tyrone
Allan J. and Marvel A. Williamson Fund**
Woodward Radio Group

Chairman's Partner (\$2,500 - \$4,999)

Associated Bank NA
Bassett Mechanical
John F. and Dianne Bergstrom
Richard and Jennifer Bergstrom
Robert and Susan T. Brown
Jay and Susan Bush
Doug and Gayle Buth
Wendy, Dan, Catie and Tommy Clausz
Geoff and Kelly Crowley
Mr. and Mrs. Robert C. Di Renzo
Jud and Mary Beth Fowler
Galloway Company
Great Northern Corporation
James and Jane Hayes
Chad Hershner and Jeff Amstutz
Steve Jahnke and Rich Marshall
Johnson Bank/Johnson Insurance
William and Dorian Jordan
Linda R. Kennedy and Steven R. Lande
Charitable Fund**
Polly and Tim Lehman
John and Sally Mielke
One Communications
Thomas J. Prosser



Chairman's Partner (con't)

The Real Estate Group Foundation Fund*
Mark and Jeanne Richards
Doug and Carla Salmon Foundation
John Schmidt and Julie Schaller-Schmidt
Shirley A. Schmidt
Tom and Mary Schmidt
Charles and Diane Siekman
Mark and Ann Steinmetz
Dave and Shirley Strange
Pat and Janet Thompson
Catherine Tierney and Maury Dresang
Mike and Peggy Weller
Zuppas

President's Partner (\$1,500 - \$2,499)

Alison Heiser Associates
Naomi and Dennis Bahcall
Bob and Maxine Brucker
Frances Burstein
John and Rose Bykowski
Christensen Heating & A/C Inc.
William and Patricia Doering
Lloyd and Alyce Dumke
C. Raymond and Mary R. Durkee
Ralph and Stephanie Evans
Steve and Mary Evans
Daniel and Elizabeth Flaherty
Michael Gavronski and Debra Terry
Dean and Pam Gruner
Gunderson Laundry and Dry Cleaning
Mame and Daniel Heaney
Heid Music Co., Inc.
Bill and Fran Henry
John and Morgan Hogerty II
Ray and Mary Hosmer
Johnson Controls, Inc.
Lynne F. and Robert T. Keller
Phil and Rachael Keller-Graebel
Richard and Suzanne Kiefer
Karen and Maury Laws
Glenn and Martha McKendrick
Judy Merritt
Doug and Erica Meyer
Stuart and Sandra Mikkelsen
Jeff and Kim Miller
Kevin and Candice Mortara

Pete and Marla Nelson
John and Sandy Nussbaum
Michael and Kathleen Reese
Jeff and Jone Riester
Schenck SC
Tom and Pat Schinabeck
Julia and Tammy Smith
Barbara and Rick Stack
Time Warner Cable
Donald and Janet Turner
Tweet/Garot Mechanical, Inc.
Wells Fargo Bank

Producing Partner (\$750 - \$1,499)

Anonymous (3)
Pete and Mary Abraham
American National Bank Fox Cities
Dave and Sarah Anderla Family
Steven and Maria Arndt
John and Diane Barkmeier
Dan and Sue Began
Neal Bolinske
Don and Bonnie Brandenburg
Mark and Katie Chelsky
Darwin and Jeanette Copeman
Steven and Kathryn Correia
Crane Engineering
Jeffrey and Lea Curler
Robert and Deborah DeKoch
Steve and Angie Dungan
Bill and Gail Engler
Patrick L. Fahrenkrug
Dr. and Mrs. Timothy Flaherty
Brian and Jauna Flanagan
Fox Valley Spring Company, Inc.
Fox Valley Tool & Die Inc
Janelle Fuhrmann
Allan and Elizabeth Gibson
Mary and Dave Gitter
Jay and Peggy Gottleib
Gary and Judy Gunderson
Timothy Hanna
Marty and Kelli Heindel
Jim and Tammy Hemmen
Donald and Marilyn Jens Hetzler
Michael and Marcia Hittle
Ann and Gary Hoerning
Chuck and Joanne Hoffmann
Lou and Joanne Horn
Griffith and Lois Howell
Sharon and Katie Hulce
Ironwood Foundation
Don and Betty Jabas Fund*
Mike and Katy Kapocius
Gregory and Susan Knudson
Don Koskinen
Cosette L. Lang



Mirror Image Project "Little sister"

Jim and Marcy Lee
Legacy Private Trust Company
Vicki Margolis
Mechanical Contractors Association
Terry and Victoria Mulder
Marvin Murphy and Ruth Ann Heeter
Scott and Amy Olvey
OMNNI Assoc., Inc.
Ed and Sue Patschke
Ken and Shelley Podell
Gail Popp
Jim and Chris Putman
Carol M. Radtke
Keith and Andrea Rohde
Simon and Melanie Roselaar
John and Pat Salisbury
Timothy H. and Mary Jo Seline
Mary and John Sensenbrenner
Sue and Larry Silton
Rollie and Sue Stephenson
Jack and Peggy Sturm
Dr. Gregory Swanson and Ann Gain
Sheri and Dean Tuzinkewich
Maria and Chad Van Laanen
Robert E. Vlach Jr.
Dr. and Mrs. Kevin Wasco
Willis
Tim and Jane Zuck

Contributing Partner (\$350 - \$749)

Anonymous (6)
Diane and Michael Abraham
Mark and Jill Austin
Jeff and Tracy Badger

Barbara Ballard and David Wuestenberg
Robert J. Bastic II
Kim and David Beiser
Cynthia L. Berton
Joe and Ann Bielinski
Leon and Karla Blair
Will and Ruth Bloedow
Linda A. Boldt
Terry and Kate Bomier
Darwin and Barbara Bork
Dick and Carol Brauer
David and Gloria Brensike
Ryan and Tara Brzozowski
Jeffrey S. and Denise R. Burkett
Mike and Carrie Campbell Family
John and Connie Cappy
Dennis and Nancie Chuchel
Joshua and Erin Chudacoff
Blaine and Alice Claypool
Paul and Michelle Coenen
Darlene and Ron Coley
Gary and Bernadine Coley
Thomas Craig
Bill and Darlene Crowe
James and Gail Cummings
De and Dan Dalum
Michael and Priscilla Daniels
Catherine and Lynn Davis
Lee and Yvonne DeGroot
Mark and Katie Di Pietro
Yvette and Ronald Dunlap
Tammy and Dan Ebben
Jo Egelhoff and Dave Schnarsky
David and Kay Eggert

**Contributing Partner
(con't)**

Charles Erickson and E-Ben Grisby
 Deb Fantini
 Chick and Peggy Fenlon
 James G. Fletcher
 Linda Freed and Anthony Golden
 Debra and Peter Garetson
 Dr. Michael Gitter
 Charlie and Beverly Goff
 Bob and Kathy Golz
 Tom and Mary Grace
 Paul and Judi Greisinger
 Thomas and Linda Grow
 John and Carolyn Gusmer
 Mark and Linda Hallett
 Bart and Greta Hammond
 John A. and Judy A. Hanson
 Mary and Jeff Harp-Jirschel
 Fred and Wendy Hauser

Zoltan and Kathryn Kadar
 Dave and Paula Kamps
 Frank and Kim Kearny
 Irv, Janet and Skyler Keough
 James and Jacqueline Klimaszewski
 Paul and Brenda Klister
 Carl and Jere Kloehn
 Jeff and Shelby Knezel
 Jerry and Jackie Kobierecki
 Julie-Anne and Jim Kress
 Walter and Deborah Krueger
 Daniel Kubsh
 Glen and Jean La Frombois
 Larry and Penny Lancaster
 Richard and Kathleen Lane
 John and Sue Larson
 Dale Leonard and Jeremy Pagel
 Richard and Laurie Leonard
 D. Holly & Randal Lifke
 Bob and Gail Limoni

Jeffrey and Pamela Patzke
 The Paynter Family
 Todd and Leela Peebles
 Mark and Cheryl Perkins
 John and Karen Pieper
 Deb Pionkowski
 Dr. Frank and Nicole Podojil
 Rad and Bev Radke
 John and Sarah Ranes
 Dr. Michael E. and Sarah Ray
 John and Nancy Reader
 Mark and Theresa Rechner
 Kay and Ron Roberts
 Jim and Emily Roeder
 Fred and Ginny Russler
 Michael and Marian Sabee
 Jim and Megan Sarkis
 Jim and Diane Sarosiek
 Mark and Jane Savides
 Sara and Jeff Saxby
 Amy and John Schubbe
 Ron and Mary Schuelke
 Paul and Mary Schulz
 Mr. Helmut Schwab
 Mike and Sandy Schwanke
 Bill Selle
 Jane and Donald Shepard
 Marion Shepard
 Mowry Smith Charitable Fund*

Drs. Matt Snyder and Darya Alexander
 Kevin and Angela Sours
 Dennis and Patricia Sphatt
 Dr. Richard and Kristin Staehler
 Bill and Tanya Stegall
 Sharon Stilp-Kressin
 Timothy and Lynn Suess
 Bob and Sue Sullivan
 Matthew and Heather Thenell
 David and Karen Thomsen
 Rollie and Judy Tonnell
 Ron and Karen Toshner
 Steve and Peri Tyink
 Tom and Sue Vande Walle
 Steven and Michelle Vandenberg
 Richard and Kay VanDeWeghe
 Peter and Su Van Houwelingen
 Dale and Peggy Von Behren
 James and Tina Wangerin
 Dennis and Mary Ann Wepfer
 Graham and Barbara Werner
 Dale and Carol Westphal
 Wyon and Mary Jo Wiegartz
 Lou and Carol Wilhelm

John and Gail Ann Winkler
 Lorraine and Giles Wittig
 Vicki and John Wuebben
 Patricia and Raymond Wuerger
 Dr. Jeff and Holly Zander
 Jay and Diane Zempel
 Walt and Aline Zerrenner
 Doris M. Zwack

**Supporting Partner
(\$150 - \$349)**

Anonymous (4)
 Dr. Zenoun and Enas Abouzalam
 Thomas and Carol Alberts
 Jack Arter
 James and Kay Bartz
 Barry and Eve Bauschek
 Mary Bayorgeon
 Patrick and Sandra Began
 Edward and Susan Benedict
 William and Mary Bergstrom
 James and Susan Blair
 Kathryn Bronk
 Tom and Kate Burgess
 James and Linda Burkhardt
 Larry and Cheryl Cain
 Dick and Chris Calder
 John and Jane Campbell
 Margaret Carroll
 Gordon Case
 Larry and Joyce Casey
 Mr. and Mrs. Dan Cloud
 Tim and Lauren Cross
 Henry and Margaret Czachor
 Terry and Marsha Dawson
 Peter and Judy Derocher
 Miriam Douglass
 Steve and Barb Dreger
 Tom and Louise Dreier
 Walter H. Drew
 Leo Eberhardt
 Bruce and Gail Enke
 Tim and Debbie Fast
 Phillip and Mary Florek
 Tait and Victoria Fors
 Stephen and Dorothy Freschl Fund*

Pat and Amy Galloway
 William and Joan Geenen
 John and Julianne Giese
 Jack and Shirley Gillespie
 Baylee Gordon
 Will and Carol Haack
 Greg and Mary Haasl
 Mark and Karen Hackbarth
 Bob and Nancy Hackinson
 William and Katherine Hale
 Bob and Sheila Hallada
 Mrs. Leslie B. Hamilton
 Patricia Hausler
 John and Kathy Heck
 Kathy Hedrich
 Peg and Gerry Henseler
 Robert and Mildred Herder
 Norbert and Mary Hill
 Kurt Hintz
 Martin and Sharon Hintz
 Thomas K. Hocking
 Nancy Homburg

Doris L. Horback
 Gordon and Mary Jeppson
 Barbara G. and Norman C. Johnson
 Jeffrey and Debra Johnson
 Dr. Robert Johnson
 Carol and Ken Johnston
 Jacquelyn King and William Stoeger
 Jim and Dorene Koehne
 Frank and Jean Koffend
 Kelly and Sheila Kornely
 Carole Kortenhof
 Jenny C. Kostuck
 Dr. Penny L. Krampien
 Rick and Mary Langan
 Larry and Bonnie LaPlant
 Marjorie Leffin
 John and Ronda Liebmann
 Michael and Mary Lokensgard
 Harvey and Margaret Lorenz
 Robert Lyle
 Gail Malott
 David and Cynthia Maltry
 Jim and Millie Mauthe
 Paul and Barb McCann
 Steven and Beverly McCann
 Nancy McGinnity
 E. Frank and Linda C. McKinney
 Charlie and Judi Miller
 Jim and Mary Mislagle
 Marian Wolfe Ming
 Charles and Roxanna Morgan
 Don and Jill Murrow
 Carl Olson and Lauretta Krcma-Olson
 Roger and Nancy Orlady
 Mike and Marcia Ostwald
 David H. and Suzanne J. Peck
 James W. and Joy B. Perry
 Kathryn Pettis
 Carol and Bill Pingel
 Mr. Dale Pohjola
 Bill and Natalie Raaths
 William and Patricia Radford
 Randy and Michele Reichardt
 Lyle and Victoria Reigel
 Fred and Marie Rettler
 Trina Reynolds
 Pat and Tom Rodgers
 Ellen and Phillip Roe
 Kenneth and Barbara Roloff
 Sal Rotolo
 Sherry and Jim Rougeux
 Richard and Kathleen Ruhsam
 David and Nikki Rust
 David and Sue Schini
 Stevie and Ed Schmidt
 William and Cheryl Schmidt
 Robert and Ann Schneider
 J. Thomas and Emmalee G. Schomisch
 Gladys and Edwin Schwandt
 Mike and Sue Siddall
 Bob and Char Sigman
 Gladys Smith
 Joan R. Smith
 Raymond and Betty Smith
 Harry and Bonnie Spiegelberg
 Marilyn Spieth
 Ron and Judy Steindorf
 James and Maria Steinmetz
 Wayne and Dorothy Stoflet
 Carl and Barbara Stracka



Steve and Sue Havey
 Jim and Janet Hemmen
 Gerald and Barbara Henley
 Greg Hergert
 Walt and Sue Herscher
 Jeff and Lisa Hesson
 Pat Hetland
 Robert and Kathryn Hieronimczak
 Don and Kris Hietpas
 Dean V. and Patricia A. High
 Jeffrey and Susan Hoppa
 Jeff Hunter
 Richard and Barbara Huss
 IATSE Stagehands
 Jerry and Helene Iverson
 Mark and Tobi Johannsen
 Steve and Nancy Johnshoy
 Jeff and Jodi Johnson
 Ron and Jane Johnson
 Thomas Joseph

Frances Lindemuth
 Robert and Deb Loomis
 Mark and Mary Loper
 Mr. and Mrs. Thomas and Jessica Martine
 Pilar Martinez
 Dr. Gerald I. Metalsky
 Bob and Judy Mickelson
 Michael E. Miller
 Kurt and Amy Moe
 Tim and Ann Moe
 Tim and Shari Mologne
 Drs. Jay and Laurie Muller
 Linda and Keith Murie
 Todd and Ellen Needham
 Todd M. Newell
 Gale and Tim Nickels
 Frank and Marilyn Ossian
 Carl and Renee Otto
 Fred and Barbara Pahl
 James Parker



Ticketholders attending *The Wizard of Oz* participate in preshow activities

Supporting Partner (con't)

Wayne and Ruth Streck
Kenneth and Kathryn Suess
Thomas and Joleen Swadley
Dave and Jan Tews
Peter and Helen Thiel
William Totzke
Bill and Gloria Tubbs
Barbara Uehling
Dick and Teena Van Driest
Janie J. Vasquez
Ruth J. Weber
Wally and Alice Wolfmeyer
Bill and Beth Wyman
Steven and Brigid Yeomans
Peter and Valerie Zellmer

Proud Partner (\$50 - \$149)

Anonymous (46)
Tom and Jan Abendroth
Larry and Lori Abler
Mark Adams
Akimi Adler
Cheryl D. Allen
Kenneth and Ruth Anderson
Violet Bailin
Chuck and Dorothy Bauer
David Bechlem
Mary Bell
Mike and Sue Bell
Mary and Dennis Berger
Sharon A. Bergsma
Jim and Sue Bero
Patty and Bill Bero
William J. Bero, Jr.
Vanis Bettin
JD and Jenni Black
Alan and Sharon Blake
Lou and Corine Blasczyk
Mark and Mary Boelter
Jerome and Carol Boettcher
Austin and Judith Boncher
Charles and Joyce Bongers
Debi Brace
William and Marta Brace
Bob and Audrey Brandt

Mariann Brantmeier
Gordon Braun
Jennifer Breunig
Gene and Mitzi Britton
Mr. Ray Brock
Timothy Brost
Carol Brown
Jim and Donna Bub
William Totzke
Bill and Gloria Tubbs
Barbara Uehling
Dick and Teena Van Driest
Janie J. Vasquez
Ruth J. Weber
Wally and Alice Wolfmeyer
Bill and Beth Wyman
Steven and Brigid Yeomans
Peter and Valerie Zellmer

Michael and Patricia Exarhos
John and Ruth Fafinski
Bob and Jan Fahrback
John and Sharon Fenlon
Nancy Fibiger
Michael Field
Erin Flanagan
Karen Foth
Michael Francis and Judy Wolfinger
Bob and Phyllis Freeman
Rebecca Freeman and Stephen Fusfeld
Kay Frome
Jim and Patti Frounfelter
Amy Fullerton
Margaret Fulton
Bill Fuss
Kristi Gamache
Gary and Michelle Gawinski
Carleton and Mardelle Giese
Liz Ginke
Mr. and Mrs. Peter Glander
John and Sheena Glass
Mark Gleason
Hugo Gonzalez Lopez
Jerry and Paula Gozner
Julie Green
Mary Ellen and Ron Green
Le Anne Greene
Les and Ellen Gunter
Lloyd and Dar Gunther
Leah Hackbarth
Karen Hammer Family
Shirley Hanford
Patricia Hanke
Darren and Julie Hanusa
Mr. and Mrs. Hardin and Family
William L. Harke, Sr.
Ray Hasenauer
Don and Joan Hawkins
Judy Heber
Melinda Heinritz
James and Carrie Heinzen
Deb Heller
Thomas and Jane Hempel
Laura A. Henke
Lisa M. Hennessey

Peter and Polly Hensen
Don and Eileen Herring
Laurie Herzfeldt
Tom and Sue Hierl
Merlin Hietpas
Diane and Ken Hill
Ken Hischke
Brian Hoefs
Dan and Bev Hoks
Mr. Emmett H. Hoks
Don Holso
Dana M. Hotchkiss
John and Diane Hotynski
Robert and Mary Huber
Dr. Brad Hunter
Brennan and Ellen Hussey
Tom Igielski
Debra Janda
Marcie Janz
Ginny Jenks
Lara Joanas
Michael and Linda Johannes
Glen and Amy Johnson
Judy T. Johnson
Vicky Johnson
Kerry and Larry Jones
David Kaphingst
Kevin and Lisa Kasperek
Kevin Kavanaugh
Gail Kellermann
Peter and Kate Kelly
The Kent Family
Ann Kerscher
Joan Kjos
Ann and Walt Kleman
Ann P. Kloehn
Timothy and Chris Klunk
Joseph and Donna Koelbl
Holly Koesling
Deb Koester
Dr. and Mrs. Timothy Koll
Cynthia Kositzke
James Krause
Henry and Char Krokosky
Joan Kropilnicki
James and Nancy Kuebler
James and Lorna Kuehl
Chuck and Linda Kuen
Gweneth M. Kuse
Jerome and Marlene Kuskowski
Ernie and Annette LaBrake
John and Molly Landis
Patrick and Bonnie Landreman
David and Karen Lee
James Lenz
Tom and Jeannie Leske
Steve and Lynn Lewandowski
Tom and Pat Lison
Greg and Kay Lockhart
Sue Loka
Tom Lonsway
Michael and Linda Loomis
William Loss
Eleanor Lutz
Charles and Kathleen Lynch
Sandra L. Mader
David and Judith Madison
Steve and Jayne Magrecke
David Maret
Michael and Jane Mariuzza
Marlin Marks
Kathy Maronek
Mr. and Mrs. Andrew Martin
Jack and Sandy Mason
Viola F. Matson
LeRoy and Diane Matuszak
Bob Mc Mahon
Lisa and Mike McAllister

Jane McCormick-Ripp
David and Mary McKay
Helen McKean
Joanne Meier
Pat and Paul Meier
Tania Meyer
Robert Miles
Colleen Miller
Gary and Wendy Miller
Robert and Thelma Miller
Jean Mittag
Molsbee Family
Gail Morkemo
Tom Morse
Joseph and Katherine Murphy
Elaine Nelson
Tana Nelson
Jennifer Noe
Brian Novotny
Rick and Barb Nuetzel
John and Elizabeth O'Connell
The Olbrantz Family
Alan and Lorna Parmenter
Jan Path
Julie and Gregory Pawlak
Lynn and John Peters
Chris and Kris Peterson
Judy B. Phillips
Becky Piotrowski
Merry Poast
Virgil Pokorski
Fred Pospeschil
Elizabeth Possley
Barbara Pottner
Bob Pouzar
Connie Prasher
Kevin Primeau
Barbara Purvis
Peggy and Robert Qualls
Art and Pam Rathjen
Donna Rathke
Paula Reardon
Rich and Harriet Redman
Paul and Nancy Reis
Achim and Elaine Reschenberg
Mr. and Mrs. Ray P Rex
Jeremiah Reynolds
Mikhail Riabov and Tatiana Kissina
Patricia and Gerald Rickman
Jennifer Riedeman
Jim and Allie Riedl
Kim Rietbrock
Mark and Mary Robillard
Carol Rohr
Mernie Roloff
Charles and Suzanne Ross
Ron and Kaye Rossow
The Timothy Rudd Family
Barbara and Don Russell-Mendyke
Wilbur and Marla Sarino
Steve and Chris Sarokin
Rick and Kris Sather
Tim Schellinger
Mr. and Mrs. Lawrence Schlosser
Thomas Schmidt
Alice Schnell
David and Carolyn Schoening
Connie and Glenn Schroeder
Mike and Karen Schroeder
Robert and Shirley Schroeder
Linda Schuldes
Gina Schulz
Frederick and Vivian Schutte
Sue Schwebs
Sajja Searles

Matt and Chris Seifert
Paula S. Sengstock
Ken and Joanie Settle
Frank and Marilyn Shearer
Carol Sievert
Allan and Kathie Skruby
Sandra Smith
Diane Smoody
Carala Spengler
Cathy Spiegel
Roberta G. Sprowl
Margaret L. Steckbauer
Brad Steinbach
Eunice Stevens
Ann Stevning-Row
Chad and Kristi Stingle
Robert and Linda Storma
Bruce and Cindy Stowe
Luann and Bill Streur
Tom and Pam Streur
Mary W. Sturtevant
Bruce and Alice Sturzl
Daniel and Susan Tentcher
Denise Tessen
Lajoy Thern
Ron and Lisa Thiry
Jim and Kathy Thunes
Dana Toraason
Mary P. Tracy
Rosemary Trettin
Deb and Rich Trombly
Howard Unrath
Mike and Ann Upchurch
Dave and Mary Van Dyke
Dorothy K. Van Loo
Jean and Bob Vande Hey
Kathy and Dave Vanden Boogaard
David Vander Zanden
Sheela VanStippen
RaNae Velasquez
Carol Ventura
Amy Vogltanz
Gerald and Sharon Vogt
Michael and Noriko Vogt
Jan and Nancy Volk
Adam and Melinda Vonderahe
Donald and Jean Voogt
Dr. Dieter M. and Ruth L. Voss
Craig Waldvogel
Brian and Catherine Wallace
Mary Weis
Gwen Wenzell
Mary and Dallas Werner
Sue and Al West
Pamela Wheeler and Debra Koester
Gary and Diane Whipp
Howard and Mary Whitehead
Dave Wiatrowski
Frances Wienke
Brenda Wilusz
Mrs. Donald Winkers
Rev. Duane and Connie Wisner
Corinne Wocelka
Faye A. Wohlrahe
Doris Wolf
Ross and Holly Wolfe
Dr. and Mrs. Richard Wolfgram
Lynn and Mary Wussow
John and Phyllis Zeiss
Jan Zenner
Greg and Linda Zickuhr
Kristine Zimmer Orkin

*Fund within the Community Foundation for the Fox Valley Region

CONTRIBUTORS (as of June 30, 2010)

The Fox Cities Performing Arts Center would like to thank the following individuals and organizations for supporting the Center's new and existing programs. Through their support the Center is able to ensure its programs remain accessible to the community.

GRANTS

Of Mice and Men and *Shidara* were supported by the Performing Arts Fund, a program of Arts Midwest funded in part by the National Endowment for the Arts with additional contributions from Wisconsin Arts Board, General Mills Foundation and Land O'Lakes Foundation.

Bridge Grant from unrestricted Funds within the Community Foundation for the Fox Valley Region, Inc.

The Broadway League Inc. The Frank C.

Shattuck Community Fund within the Community Foundation for the Fox Valley Region, Inc.

John and Sally Mielke

John and Sally Mielke Family Fund providing scholarship assistance for the Fox Cities P.A.C. Student Support Fund

Romeo and Juliet was supported by the Marise Evadne Gustafson Fund within the Community Foundation for the Fox Valley Region, Inc.

Partial support for open captioning provided by the Theatre Development Fund

Vandenberg Charitable Fund within the Community Foundation for the Fox Valley Region, Inc.

Mission-based programming was supported in part by a grant from the Wisconsin Arts Board with funds from the State of Wisconsin and the National Endowment for the Arts.

GIFTS IN-KIND

Foxley's Gallery Ltd.

Marilyn Schenian

Vande Walle's Candies

Zuppas

MATCHING GIFT ORGANIZATIONS

Gannett Foundation, Inc.

IBM Corporation - Matching Grants Program

Illinois Tool Works Foundation

Johnson Controls Foundation, Inc.

Johnson & Johnson Family of Companies

JPMorgan Chase Foundation

Kimberly-Clark Foundation

Macy's Foundation

Neenah Paper Inc. Matching Gift Center

Takeda Pharmaceuticals North America, Inc.

Thrivent Financial for Lutherans

Unilever United States Foundation Inc.

Wisconsin Energy Foundation

MEMORIAL AND HONORARY GIFTS

In Memory of Robert Roloff

Dan Ariens

Neal Bolinske

Alice Claypool

Thomas and Mary Ditter

Sandra Engman

Joe Genereux and Shannon Riley

Dawn and Daniel Gerner

Carleton and Mardelle Giese

John and Julianne Giese

Chad Hershner and Jeff Amstutz

Kaukauna Kiwanis Club

Jeff and Rene Long

Gregory and Susan Lux

Anita Lyle

Jeffrey and Jone Riester

Roberta Roloff

Sadoff Iron and Metal Company

Lawrence and Juli-Ann Scott

Susan Stockton and William Garvin

Christina Winch

In Honor of Ashley and Andy Baldwin

The Fox Cities P.A.C. advancement team

In Honor of O.C. and Pat Boldt

Margaret and Brian Anderson

Cynthia Stiehl

In Honor of Tara and Ryan Brzozowski

The Fox Cities P.A.C. advancement team

MEDIA PARTNERS

NBC 26

WFRV-TV

WLUK-TV

WHBY

WNAM

WPR

WROE

The Post-Crescent

Fox Cities Magazine

Women Magazine

Yellow Book

DISTINGUISHED SERVICE AWARDS

Each year, the Center recognizes individuals who provide outstanding service to the organization through its Distinguished Service Award.



2009/10 Distinguished Service Award Recipients
(L-R): John O. Gilbert, Alyce M. Dumke, Walter S. Rugland

THE KEYSTONE CAMPAIGN DONORS (as of June 30, 2010)

The Center looks to a bright future with the support of its Keystone Campaign contributors. Formerly known as the Future Fund, Keystone donors are helping the Center to ensure the performing arts now for future generations in the Fox Cities and Northeast Wisconsin.

\$1,000,000 +

O.C. and Pat Boldt
William F. Heckrodt

\$250,000 - 999,999

Chuck and Barb Merry
Seifert Family Fund*
Frank C. Shattuck Community
Fund*

\$100,000 - 249,999

Bergstrom Automotive
The Boldt Company
John and Marilyn Gilbert Fund*
Doug and Carla Salmon
Foundation*
Schmerein Family Fund*

\$50,000 - \$99,999

Robert and Laura Abernathy
Jon and Becky Stellmacher
Susan Stockton and
William Garvin
John and Susan Toussaint
U.S. Oil/Schmidt Family
Foundation, Inc.

\$25,000 - \$49,999

Otto and Joyce Bytof
Calnin & Goss, Inc.
Employment Resource
Group, Inc.
Dan and Beth Flaherty
Mame and Daniel Heaney
Heartland Business Systems
Chad Hershner and Jeff Amstutz
Jerry and Helene Iverson
MCC, Inc.
The Thomas J. Prosser Family
Mark and Jeanne Richards
Amelia and Walter Rugland
Catherine Tierney and
Maurice Dresang

\$10,000 - \$24,999

Margaret and Brian Anderson
Yvette and Ron Dunlap
Michael and Shirley Geall

Dave and Mary Gitter
John and Morgan Hogerty
Linda Kennedy and Steve Lande
Barb Merry & Gail Popp, Realtors
Gail L. Popp
Tom and Jan Scullen
John and Mary Sensenbrenner
Richard and Margot Warch
Mike and Peggy Weller
Doris Zwack

\$5,000 - \$9,999

Lloyd and Alyce Dumke
Karen and Maury Laws
Leech Charitable Fund*
Jeff and Jone Riester
Tom and Mary Schmidt
SECURA Insurance Companies
Lois Smith
Sarah Traas and Michael Cisler

\$1,000 - \$4,999

Cynthia L. Berton
Tom and Renee Boldt
Timothy and Sue Bottoms
Robert and Bonnie Buchanan
Debby Dyer
Ralph and Stephanie Evans
Fox Valley Spring Company, Inc.
Thomas and Jane Frantz
Griffith and Lois Howell
Don and Betty Jabas
Richard and Judy Jodarski
The Karas Family
In Memory of Darrell Larson
Mike and Karen Marsden
Mark and Cheryl Perkins
Timothy and Maureen Shaw
Cynthia Stiehl
Steve and Peri Tyink
Hans and Mary Jane Wurster

\$1 - \$999 ♦

Dan Ariens
Randi Barnes
Jason Baugnet
Bechard Group, Inc.
John and Dianne Bergstrom
Neal Bolinske
Ann and Robert Brukart
Alice Claypool
Lynn Davis
Thomas and Mary Ditter
Judith A. Dobratz
Miriam Douglass
Sandra Engman
Dorothy A. Evans
Faith Technologies Electrical
Contractor
William and Martha Fawcett
Paul and Loa Fergot
Fox Cities Performing Arts
Center*
Fox River Fabricating Inc.
Joe Genereux and Shannon Riley
Dawn and Daniel Gerner
Carleton and Mardelle Giese
John and Julianne Giese
Roy and Donita Gross
Joyce Hackel
Chris and Evie Hartwig
James and Jane Hayes
Dayton and Amy Henderson
Lucille A. Hopfensperger
Memorial
International Union of Operating
Engineers Local 139
Carissa Johnston
Kaukauna Kiwanis Club
Camille Kemnitz



Band of the Irish Guards

Kyle Knoke
Robert and Phyllis Koch
R. Lawrence Konz
Lorna and James Kuehl
Jeff and Rene' Long
Gregory and Susan Lux
Anita Lyle
Kari Navis and Rob Fish
John and Carroll Nystrom
Radisson Paper Valley Hotel
Patricia and Tom Rodgers
Roberta Roloff
Sadoff Iron & Metal Company
Lawrence and Juli-Ann Scott
Marilyn Spieth
James Tetzlaff
David and Mary Van Dyke
Stephanie Van Vreede
Faye Velguth
Christina Winch
Jay and Diane Zempel

♦Includes proceeds from the purchase of "The Art of Labor"

*Fund within the Community Foundation for the Fox Valley Region

VOLUNTEERS (as of June 30, 2010)

The Fox Cities Performing Arts Center would like to thank its dedicated volunteers for their efforts to ensure the best live theater experience in Northeast Wisconsin.

Janet Abraham
Linda Ahles
Karen Ainsworth
Donna Arnoldussen
Robin Ashman
Karen Bachhuber
Sean Baldwin
MaryRose Bann
Diane Bardosy
Roy Baumruk
Gretchen Bednarowski

Jean Blank
Carol Bode
David Bode
James Bolek
Nancy Boll
Allen Borgwardt
Sandra Bowe
Joanne Boyer
Christine Brantmeier
Andrew Brass
Kathy Brein

Jim Case
Susi Cavness
Marcy Chapman
Meeilei Chen
Linda Christensen
Alice Claypool
Karen Cleary
Kathy Clusman
Darlene Coley
Ron Coley
Judy Collar

Cindy Damsheuser
Mary DeBruin
Bernice DeLaura
Sharon Delrow
Lois Dennik
Barbara Denton
David DeSalvo
Jean Dolan
Kathy Ducharme
Janice Dunham
Mary Dusenbery
Fran Ebben
JoAnn Ebben
Bonnie Ebbeson
Sue Eckrich
Jeanne Ehrhardt
Karen Eiting
Bernie Engeleiter
Dick Engeleiter
Lynn Erath
Susan Erickson
Lil Fahrenkrug
Pat Fahrenkrug
Edward Farrell
Bob Feavel
Mary Ellen Fisher
Mary Francis
Carolyn Frederick
Catherine Fredericksen
Don Fulcer
Mary Fulcer
David Funk
Nancy Gabriel
Sandy Gauger
Patsy Gavin
Deb Geiger
Kristine Gerhardt
Mary Gerlach
Dorothy Glaser
Nancy Glaser
Jerry Glaze
Marlene Glaze

Maureen Gneiser
Jeanne Goodman
Cherie Greek
Jeanne Greenwood
Tom Greenwood
Carol Grossman
Diane Groth
Jan Gruetzmacher
Andrew Grunert
Cindy Grunert
Randy Gummin
Julie Gummin
Pam Hagen
Joyce Hanstedt
Leonard Hanstedt
Mary Hare
Deb Hart
Patrick Hart
Helen Hart
David Hartman
Lynda Hartman
Barb Hastie
Shirley Havel
JoAnn Heegeman
Linda Hegner
Sue Heil
Edith Hein
Chris Heindel
Verna Hibbard
Eileen Hilbelink
Pat Hirby
Gerry Hofacker
Gail Hofberger
Kathy Hoffman
Zach Hoffman
Jennifer Holinbeck
Linda Holzschuh
George Howenstine
Jan Howenstine
Delores Hudson
Candy Huhn
Kathy Hurst



A volunteer paints a child's face during *The Velveteen Rabbit* preshow activities.

Pam Beetham
Nancy Behm
Jan Belanger
Steve Belknap
Renaë Belknap
Kristine Belongia
Irene Benner
Caren Benzer
Sandy Berndt
Ruth Berra
Jan Beyer

Marsha Brewer
Gloria Brickman
Elaine Brill
Marlene Brosman
Carol Burns
Neil Busse
Cheryl Butler
Cheryl Cain
Nancy Carbiener
Matthew Carlson
Gordon Case

Sara Companik
Shirley Connell
Betty Conrad
Deb Cowie
Maxine Cristy
Rosemary Cummings
Mary Cz
Janet Daelke
Ted Daelke
Peggy Dahl
De Dalum



Patrons have their tickets scanned before a performance.

Volunteers (con't)

Roxanne Huxley
 Marcia Hyatt
 Anne Jackson
 Maria Jacobson
 Joe Jankowski
 Susan Jarona
 Karen Jenneman
 Erick Jensen
 Mary Jo Jensen
 Angie Johnson
 Carol Johnson
 Leah Johnson
 Roger Johnson
 Jane Jones
 Mary Lou Jones
 Robert Jones
 Connie Juetten
 Brad Juliar
 Sharon Kaddatz
 Jerri Kahl
 Mary Karls
 Elizabeth Kay
 Heather Kelly
 Irv Keough
 Judi Kiar
 Jim Kinder

Janie Kinder
 Elora King
 Sylvia King
 Dee Klister
 Marce Knapp
 Al Kobilic
 Betty Kobilic
 Shirley Kohnke
 Gale Korth
 Christine Kosiorek
 Mary Krause
 Roger Krause
 Shirley Krause
 Kathy Krein
 Valerie Kreuzer
 JoAnn Krueger
 Pat Krueger
 Joyce Kruse
 Oliver Kruse
 Phyllis Kube
 Pearl Kunz
 Mary Jo Kurtti
 Deb Lachmund
 Joyce Laedtke
 Jillian Lallensack
 Elizabeth Lamy
 Lynn Landers

Dianne Lange
 Dorothy Lange
 Jane Lantz
 Jim Lantz
 Jane Lauer
 Beth Lautenschlager
 Jackie Lee
 Bob Lee
 Susan Lehner
 Mary Leitermann
 Mary Sue Leland
 Tom Leland
 Colleen Lemke
 Carol Lenz
 Tammie Lenzner
 Laurie Leonard
 Richard Leonard
 Sandy Lidster
 Sandy Lipina
 Ruth Littmann
 Maria Livermore
 Pat Locke
 Susan Locke
 Beth Lofgren
 Kathy Loiselle
 Mailor Lor
 Lynn Maas

Paula Macho
 Mary Ann Mack
 June Magnussen
 Rita Major
 Judy Malkowski
 Mark Marek
 Darla Martinez
 Tanna Mayer
 Jan McCarthy
 Mary McClure
 Micki McCoy
 Carol McIntyre
 Mary McGrath
 Donna Melchert
 Donald Mendyke
 April Miller
 Marge Miller
 Thelma Miller
 Robert Miller
 Julie Mills
 Mary Morlock
 Vickie Much
 Ellen Mueller
 Anne Murphy
 Marilyn Murphy
 Jane Murray
 Ruth Neeck
 Joanne Nemitz
 David Neubauer
 Janis Neubauer

Thomas Neuman
 Troy Neuman
 Todd Newell
 Stephanie Nofzinger
 Diana Novak
 Lynn Oatman
 David Olson
 Jean Orbison
 Tom Orbison
 Janette Ossman
 R. Dean Ostrander
 Geri Paschke
 Ann Paton
 Marilyn Patterson
 Penni Pautz
 Catherine Peeters
 Carol Penterman
 Nanetta Penterman
 Marlene Peterson
 Peggy Philippi
 Ken Philippi
 Jane Pingel
 Sally Pittman
 Betty Polacek
 Linda Pompa
 Val Poppe
 Marilyn Porter
 Mary Pozolinski
 Don Rademacher
 Sarah Radloff



Fox Cities P.A.C. volunteers get ready to greet patrons.

Volunteers (con't)

Terry Rebholz
Betty Reinke
Patricia Reinsbach
Audrey Renier
Alice Reynolds
Dan Ritchie
Sue Ritchie
Larry Rogers
Pat Rogers
Ralph Rohde
Dan Rose
Rebecca Ross
Lola Ruge
Barbara Russell
Violet Sagert
Faith Sauer
Scott Sauer
Mary Schilling
Phil Schlafer
Joanne Schmalz
Sue Schmeichel
Betty Schmidt
Dave Schoenke
Sally Schoenke
Deb Schroeder
Cathy Schultz
Cathy Scott
Beth Seghers
Marilyn Seidl

Elizabeth Senso
Rita Sheridan
Pat Shoemaker
Mary Simon
David Sipe
Susan Sleezer
Denise Smith
Joan Smith
Van Smith
Deborah Smoll
Lee Smoll
Judy Snavely
Pat Sommer
Skip Sommerfeldt
Jenny Sonnleitner
Marilyn Spieth
Chris Spurlock
Milton Staskal
Trudy Staskal
Lynn Staszak
Charlotte Steinkraus
Ginny Stenz
Marv Stenz
Lorraine Steuck
Dorothy Stoflet
Wayne Stoflet
Carole Strohm
Roger Strohm
Marilyn Stroud
Ron Stroud



Fox Cities P.A.C. volunteers enjoy their volunteer appreciation event.

Carol Stuyvenberg
Joanie Suszko
Vicki Syring
Maxine Szymik
Sue Tappy
Betty Ann Techlin
Carl Techlin
Andrea Thiel
Rita Thiel
Jeannie Thompson
Karen Thorne
Sally Timm
Lori Torrance
Pam Ulness
Beverly Underwood
Don Vajgrt
Bethany VandeKolk
Shirlyne VanDenBogart
Donna VandenHeuvel
Bonnie VanderVelden
Lynn VanDien
Mickey Vanevenhoven
Donna VanGrinsven
Marti VanRooy
Bonnie VanZealand
Beth Vercouteran
Judy Verhagen
Kelly Voss
Connie Walbrun
Shirley Walker

Bernie Wall
Florine Wall
Jane Wallman
Diane Weber
Kate Wees
Jill Wegand
Gwen Wenzell
Deb Wentz
Sue West
Tess Wheeler
Cynthia Whitely
Laura Wilfer
Betty Wilke
Judy Winzenz
Cindy Wirth
Marlene Wirth
Nancy Wittrock
Leah Wood
Ruth Wood
Marbeth Woodkey
Bob Worachek
Judy Worachek
Nancy Wymen
Tony Wymen
Esther Young
Carla Zacharias



Fox Cities P.A.C. volunteers are excited for Mamma Mia!

THANK YOU TO OUR ANNUAL BUSINESS PARTNERS

Partners are listed as of June 30, 2010. To become an Annual Business Partner, please contact the Center at (920) 730-3714.

LEADER LEVEL



PLATINUM LEVEL



DIAMOND LEVEL



GOLD LEVEL



SILVER LEVEL



GRANTS



2009/10 BOARD OF DIRECTORS



Top row (L-R): O.C. Boldt, Jon Stellmacher, Kathi Seifert, Ralph Evans, Jeff Riestler, Steve Tyink, Mike Weller; Middle row (L-R): Susan Stockton, Karen Laws, Sharon Hulce, Cathy Tierney, Barb Merry, Sarah Traas, Mark Richards, John Toussaint; Bottom row (L-R): Dick Bergstrom, Mame Heaney, Linda Kennedy, Jill Beck, Walt Rugland, Beth Flaherty, John J. Hogerty II, Bob Buchanan, John Bergstrom. Not pictured: Robert Abernathy, John Bykowski, Mayor Timothy Hanna, Cheryl Perkins

CURRENT STAFF

Susan Stockton
President

FINANCE AND OPERATIONS

Laura Braun
Vice President of Finance and Operations

Ashley Baldwin
Office Manager

Danielle Binzak
Special Events Manager

Mark Di Pietro
Food and Beverage Manager

Peter Duecker
Technical Stage Manager

Tammy Ebben
Director of Event Management and Access Services

Brittany Fuller
Facility Associate Lead

Deb Garetson
Finance and Human Resources Manager

Mike Hansen
Facility Associate Lead

Gerald Henley
Director of Theatrical Productions

Polly Hensen
Scheduling Coordinator

Steve Jahnke
Manager of Volunteer and Audience Services

Jerry Kohl
Maintenance Technician

Dave Lucas
HVAC Specialist

Jeri Roberts
Facility Associate

Jamey Rose
Director of Technology and Facility

Kelly Rutten
Administrative Assistant

Jennifer Smith
Stage Manager

Tanya Stegall
Finance Assistant

Andrew Swokowski
Facility Services Manager

Kris VanDeLeygraaf
Facility Associate

Rick Volkman
Facility Operations Manager

Ed Zettler
Facility Associate

COMMUNICATIONS AND EXTERNAL RELATIONS

Maria Van Laanen
Vice President of Communications and External Relations

Ryan Brzozowski
Director of Ticket Services

Tara Brzozowski
Director of Marketing and Public Relations

Katie Di Pietro
Ticket Office Manager

Amy Gosz
Director of Programming and Community Engagement

Maggie Haddock
Marketing and Public Relations Associate

Kelsey Johnson
Marketing and Community Engagement Assistant

Anita McDonald
Ticket Office Supervisor

Kari Navis
Copywriter

Sherry Rougeux
Group Sales Manager

Kristin Schroeder
Graphic Designer

ADVANCEMENT

Chad Hershner
Vice President of Advancement

Carissa Johnston
Annual Giving Manager

Pilar Martinez
Donor Services Coordinator

Cassie McDonald
Annual Giving Associate

Diane Zempel
Keystone Campaign Associate

2009/10 FOX CITIES PERFORMING ARTS CENTER SEASON AT A GLANCE

BOLDT ARTS ALIVE!

October

- 6 Barter Theatre's *Of Mice and Men*
- 10 Bill Cosby
- 17 America's Hits on Parade with the Jimmy Dorsey Orchestra and the Pied Pipers
- 27 Sixth Annual Fox Cities Choral Music Festival

December

- 15 Nebraska Theatre Caravan's *A Christmas Carol*
- 20 The Christmas Music of Mannheim Steamroller by Chip Davis

January

- 31 Groovaloo

February

- 16 Band of the Irish Guards
- 19-20 Cabaret with Diane Schuur

March

- 5 Shidara
- 10 Ballet Folklórico de México de Amalia Hernández
- 19 The Tchaikovsky Ballet Theatre's *Sleeping Beauty*

April

- 10 American Bluegrass Masters' Tour

May

- 6-7 ODC/Dance San Francisco's *The Velveteen Rabbit*

M&I Bank Broadway Across America - Fox Cities

October

- 20-25 *The 101 Dalmatians Musical*

November

- 3-8 RENT

December

- 8-13 *In The Heights*

January

- 13-17 *Mamma Mia!*

February

- 12-14 *Cats*

March

- 23-28 *Little House on the Prairie The Musical*

April

- 20-25 *Legally Blonde The Musical*

May

- 11-16 *Fiddler on the Roof*

June

- 25-27 *The Wizard of Oz*

Thrivent Financial for Lutherans Education Series

October

- 6 Barter Theatre's *Of Mice and Men*

November

- 11 Tall Stories' *Room on the Broom*
- 12 Theatreworks USA's *Click Clack Moo*

December

- 3 *History of the Word*
- 16 Nebraska Theatre Caravan's *A Christmas Carol*

February

- 2 Mad River Theater Works' *Everybody's Hero: The Jackie Robinson Story*
- 5 The Guthrie Theater and The Acting Company's *Romeo and Juliet*
- 25 Big Wooden Horse Theatre Co.'s *Pigeon Party!*

March

- 5 Shidara
- 9 Theatreworks USA's *Seussical*
- 11 Ballet Folklórico de México de Amalia Hernández

April

- 29 JazzReach Performing Arts and Education Association, Inc.'s *Get Hip!*
- 29 JazzReach Performing Arts and Education Association, Inc.'s *Stolen Moments: The First 100 Years of Jazz*

May

- 7 ODC/Dance San Francisco's *The Velveteen Rabbit*

 Printed on paper which contains 15% recycled post-consumer fiber and was produced using 100% renewable wind energy

The 2009/10 Fox Cities Performing Arts Center Report was created by the Fox Cities Performing Arts Center's Department of Communications and External Relations. Visit foxcitiespac.com to view this report online.

Front cover: (L-R from top) *In The Heights*, Shidara, *Of Mice and Men*, Local children perform in *The Wizard of Oz*, *Mamma Mia!*, *Everybody's Hero: The Jackie Robinson Story*, Local dancers rehearse for *The Velveteen Rabbit*, *Cats*, students from Dodgeville High School chat with cast members from *In The Heights*, local students perform in the Sixth Annual Fox Cities Choral Music Festival ©Bob Rueckle, *Click Clack Moo*

Unless noted, images throughout this publication are the property of: © Fox Cities Performing Arts Center, © Image Studios, LLC.

©2010 Fox Cities Performing Arts Center



THANK YOU FOR HELPING US ENGAGE OUR COMMUNITY



Where the Arts Come Alive!

BOLDT
Arts Alive!



 *Thrivent Financial for Lutherans*
Education Series